

Learn more at [TheSkylineDifference.com](https://www.TheSkylineDifference.com).

Our team of experienced IT consultants are available to help your organization find the right solution.

Contact us today.

1.410.795.2700
Sales@Skylinenet.net

SKYLINE PRODUCTS & SERVICES USED

- Claris Portal
- Stream Manager
- TS1000, SFS1000, VA1000, MV1000
- Network Engineering
- Webpage Development*
- Network and System Security
- Network Design
- System Engineering
- Software Engineering

* Products created may require user permissions to access.



Skyline Presents

MDOT

CHART.state.MD.us/map

MARYLAND CASE STUDY - CHART

CHART is a joint effort of the Maryland Department of Transportation, Maryland Transportation Authority and the Maryland State Police in cooperation with other federal, state and local agencies. Since 2010, the State of Maryland has been engaged with Skyline in creating a statewide interoperability architecture to support video sharing around the state.

MARYLAND PARTICIPANTS

- MDOT State Highway Administration
- Maryland Transportation Authority
- Maryland Transit Administration
- Port Authority
- Aviation Administration
- Baltimore City Police
- Prince Georges County
- Montgomery County
- Harford County
- City of Annapolis Police
- Maryland State Police
- Baltimore County Police
- MCAC Baltimore County

Learn more at [TheSkylineDifference.com](https://www.TheSkylineDifference.com).

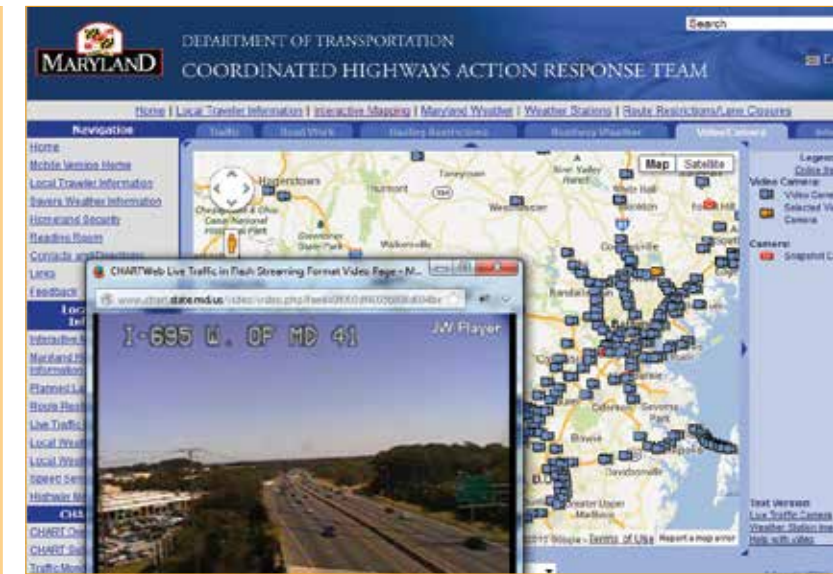


CHALLENGE

- Ingest 800+ traffic management cameras from state, county and local agencies dispersed throughout the State of Maryland.
- Integrate live video from various source hardware and software platforms.
- Distribute live video to the public via a website and mobile application.
- Distribute live video to the media, agency partners and first responders within the State of Maryland and bordering states via a secure portal.

SOLUTIONS

Skyline interconnected local counties, cities, law enforcement and trusted partners utilizing Maryland's Statewide Government Intranet (SwGI). Once the connections were made, Skyline installed network and video appliance equipment allowing CHART to efficiently share live video with trusted partners and stream certain video feeds to the public and media.



RESULTS

- Transitioned from a picture every 2-4 seconds to live streaming video at 15 frames per second for over 800 state, county and local cameras.
- Live video is now in a standard format that can be ingested by any partner agency, media, law enforcement and first responders, free of charge.
- Claris provides access to all networked cameras via PC, tablet or smart phone as well as management of user groups.
- Access for new partners can now be granted in a matter of minutes, not weeks or months.
- Video content is now available from mobile cameras mounted on first responder units.