

Skyline Presents

“Claris gives TDOT so much more flexibility in managing and sharing real-time video with partner agencies and the public. Having real-time video available on virtually any device is a significant enhancement for TDOT’s video infrastructure and highway event management capabilities.”

TDOT

— Michael Nichols, Sr. Project Manager,
Tennessee Department of Transportation.

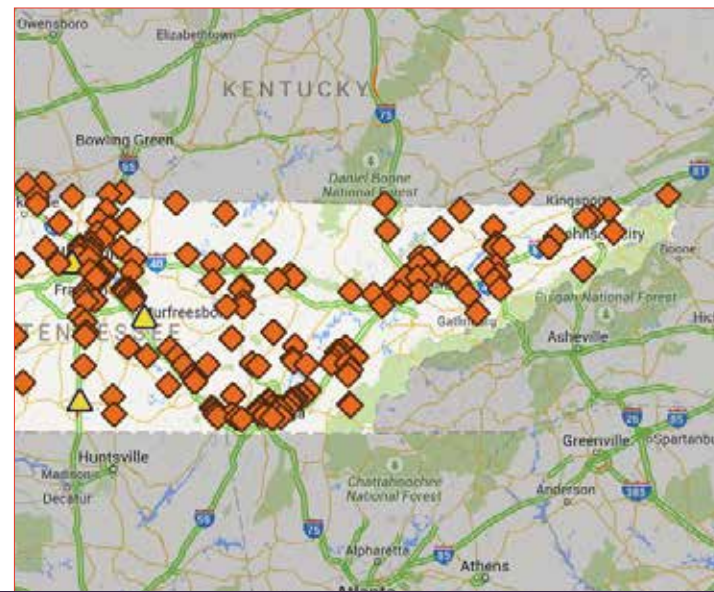
Smartway.TN.gov/traffic

TENNESSEE CASE STUDY

The Tennessee Department of Transportation (TDOT) needed a solution to easily share video between the state’s regions and provide government decision makers with insight into what was happening anywhere on the state’s roads. The DOT previously had no way of sharing video between its four regions, each with their own Traffic Management Centers (TMC’s) and partners. Furthermore, leaders in the state government and the DOT needed see a live view into any trouble area throughout the state without having to go to a TMC or relay information through third parties or the media. TDOT’s goal was to provide a scalable architecture that would significantly increase the use and sharing of video throughout the DOT and highest levels of government in Tennessee.

TENNESSEE PARTICIPANTS

- Region 1: Knoxville TMC
- Region 2: Chattanooga TMC
- Region 3: Nashville TMC
- Region 4: Memphis TMC
- Bradley County 911
- Hamilton County 911
- Loudon County 911
- Memphis PD
- Federal Highway Administration FHWA
- Tennessee Highway Patrol (THP)
- Tennessee Emergency Management Agency (TEMA)
- Office of the Governor
- Tennessee Red Cross
- TN Dept of Corrections
- TN Office of Information Resources (OIR)



Learn more at TheSkylineDifference.com.

Our team of experienced IT consultants are available to help your organization find the right solution

Contact us today.

1.410.795.2700

Sales@Skylinenet.net

SKYLINE PRODUCTS & SERVICES USED

- Claris Portal
- Stream Manager
- TS1000 and SFS1000
- Network Engineering
- Network and Systems Security
- Network Design
- Webpage Development*





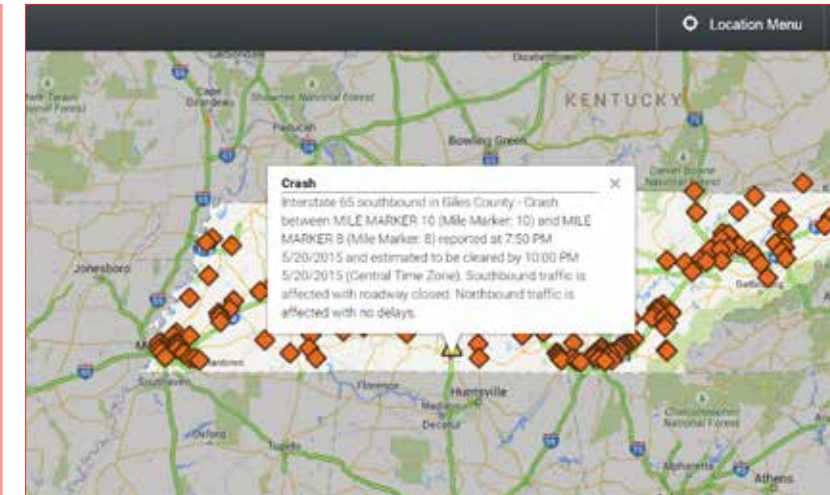
CHALLENGE

- Integrate over 500 cameras being fed into 4 regional TMC's throughout the state. These cameras are a mix of analog and digital formats with multiple manufacturers.
- Provide a video dashboard of 24 simultaneous live feeds that represent the 6 cameras in each of the 4 regions that are focused on the main areas of congestion and incidents. The dashboard needs to be viewable in the Commissioner's and Governor's office 24 x 7.
- Provide a live video dashboard of the video wall in each TMC, consisting of 18 simultaneous camera views, to be viewable in the Commissioner's and Governor's office 24 x 7.
- Provide a web-based interface so that managers and operators can remotely see video from any camera in the state on any web-enabled device.
- Deliver live video to agency partners including other government departments, first responders, media outlets and the 511 website.

SOLUTIONS

Skyline designed a video sharing network using a combination of locally hosted and remotely hosted equipment and services; installed transcoding appliances at each TMC to locally normalize the video streams into a common format for distribution; and then distributed the normalized streams from a cloud hosting center.

These streams are available in two groups: publicly available streams and partner streams, giving the DOT the ability to red-button any camera(s) to the public while maintaining the video feeds their partners.



RESULTS

- Over 500 cameras are available for viewing by internal stakeholders and external partners (state police, fire departments, 911 centers, federal agencies, etc.) securely through Skyline's video sharing platform.
- The Governor and DOT Commissioner can see first-hand each region's activities without having to travel to a TMC or even to their office.
- Skyline Claris allows TDOT to manage user access rights for sets and subsets of cameras throughout the state, allowing access to selected content in a matter of minutes.
- The DOT no longer has to provide direct access to their network for media outlets to receive live streaming video. Now, the media can access video of their choice using standard definition feeds and the option for higher definition content.
- The Skyline video platform allows TDOT to grant access so cameras from other agencies (such as schools, local police and emergency management) can be cost effectively added to the platform with a common user interface.